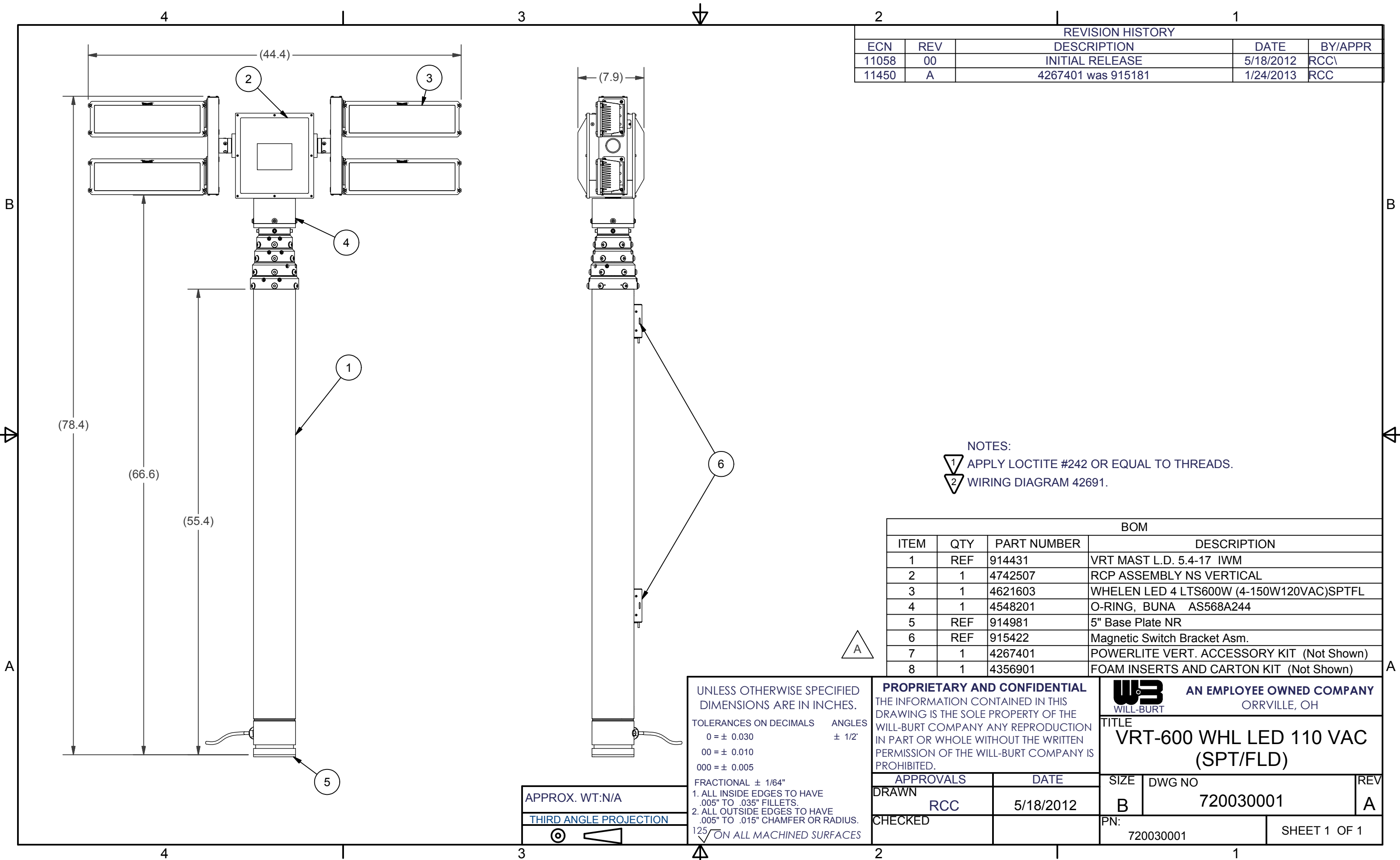


REVISION HISTORY				
ECN	REV	DESCRIPTION	DATE	BY/APPR
11058	00	INITIAL RELEASE	5/18/2012	RCC\
11450	A	4267401 was 915181	1/24/2013	RCC



NOTES:
 1 APPLY LOCTITE #242 OR EQUAL TO THREADS.
 2 WIRING DIAGRAM 42691.

BOM			
ITEM	QTY	PART NUMBER	DESCRIPTION
1	REF	914431	VRT MAST L.D. 5.4-17 IWM
2	1	4742507	RCP ASSEMBLY NS VERTICAL
3	1	4621603	WHELEN LED 4 LTS600W (4-150W120VAC)SPTFL
4	1	4548201	O-RING, BUNA AS568A244
5	REF	914981	5" Base Plate NR
6	REF	915422	Magnetic Switch Bracket Asm.
7	1	4267401	POWERLITE VERT. ACCESSORY KIT (Not Shown)
8	1	4356901	FOAM INSERTS AND CARTON KIT (Not Shown)

UNLESS OTHERWISE SPECIFIED
 DIMENSIONS ARE IN INCHES.
 TOLERANCES ON DECIMALS ANGLES
 0 = ± 0.030 ± 1/2°
 00 = ± 0.010
 000 = ± 0.005
 FRACTIONAL ± 1/64"
 1. ALL INSIDE EDGES TO HAVE
 .005" TO .035" FILLETS.
 2. ALL OUTSIDE EDGES TO HAVE
 .005" TO .015" CHAMFER OR RADIUS.
 125 ON ALL MACHINED SURFACES

APPROX. WT:N/A
 THIRD ANGLE PROJECTION

PROPRIETARY AND CONFIDENTIAL
 THE INFORMATION CONTAINED IN THIS
 DRAWING IS THE SOLE PROPERTY OF THE
 WILL-BURT COMPANY ANY REPRODUCTION
 IN PART OR WHOLE WITHOUT THE WRITTEN
 PERMISSION OF THE WILL-BURT COMPANY IS
 PROHIBITED.

APPROVALS	DATE
DRAWN RCC	5/18/2012
CHECKED	

WILL-BURT AN EMPLOYEE OWNED COMPANY
 ORRVILLE, OH

TITLE
**VRT-600 WHL LED 110 VAC
 (SPT/FLD)**

SIZE	DWG NO	REV
B	720030001	A

PN: 720030001 SHEET 1 OF 1