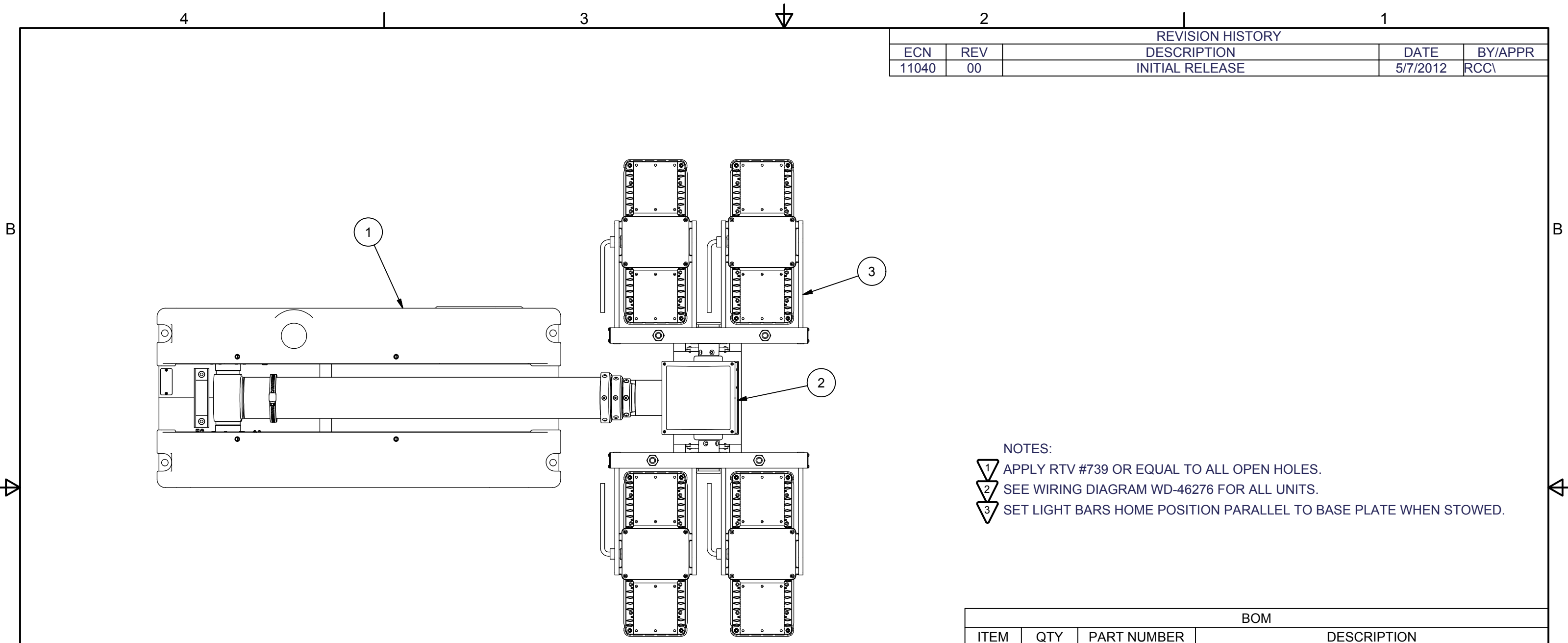


REVISION HISTORY				
ECN	REV	DESCRIPTION	DATE	BY/APPR
11040	00	INITIAL RELEASE	5/7/2012	RCC\



- NOTES:
- 1 ▽ APPLY RTV #739 OR EQUAL TO ALL OPEN HOLES.
  - 2 ▽ SEE WIRING DIAGRAM WD-46276 FOR ALL UNITS.
  - 3 ▽ SET LIGHT BARS HOME POSITION PARALLEL TO BASE PLATE WHEN STOWED.

BOM			
ITEM	QTY	PART NUMBER	DESCRIPTION
1	1	4522001	BASE ASSEMBLY, 7.5 CLR
2	1	4548301	NSC RCP, LIGHTS ONLY
3	1	4810702	SPC 920 (4X230W) 120VAC, REMOVABLE
4	1	4558903	NSC LABEL KIT BLK (NOT SHOWN)
5	1	900600	MAST OIL (SHIP LOOSE) (NOT SHOWN)
6	1	TP-4602001	MANUAL, NS 1.8/2.3, CE, CD VERSION (NOT SHOWN)

APPROX. WT:124.6 lbmass

THIRD ANGLE PROJECTION



UNLESS OTHERWISE SPECIFIED  
DIMENSIONS ARE IN INCHES.

TOLERANCES ON DECIMALS    ANGLES  
0 = ± 0.030                      ± 1/2°  
00 = ± 0.010  
000 = ± 0.005

FRACTIONAL ± 1/64"

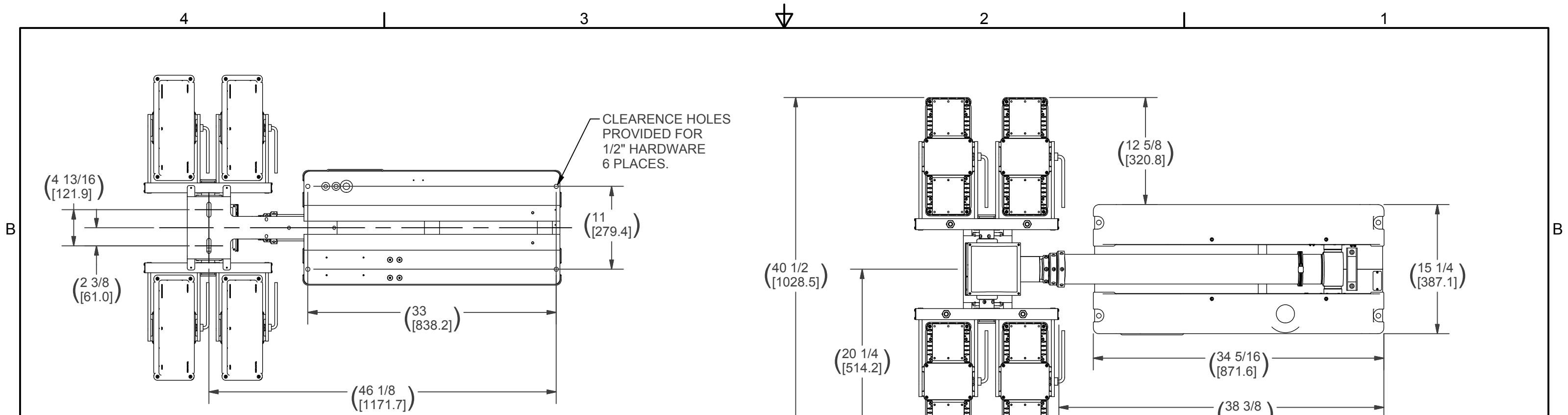
1. ALL INSIDE EDGES TO HAVE  
.005" TO .035" FILLETS.  
2. ALL OUTSIDE EDGES TO HAVE  
.005" TO .015" CHAMFER OR RADIUS.  
125 ON ALL MACHINED SURFACES

**PROPRIETARY AND CONFIDENTIAL**

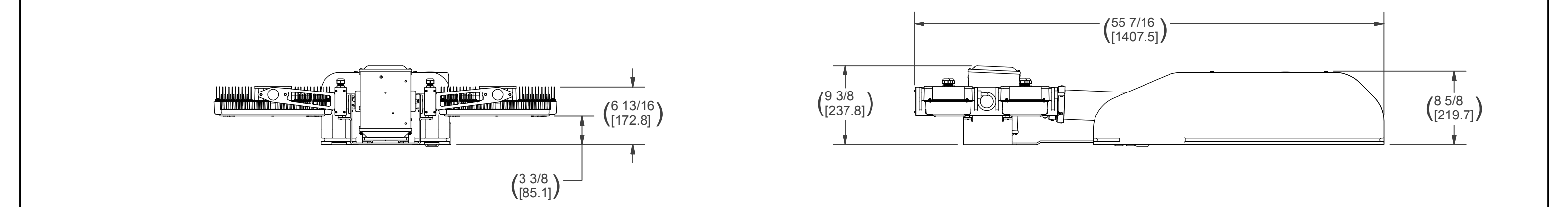
THE INFORMATION CONTAINED IN THIS  
DRAWING IS THE SOLE PROPERTY OF THE  
WILL-BURT COMPANY ANY REPRODUCTION  
IN PART OR WHOLE WITHOUT THE WRITTEN  
PERMISSION OF THE WILL-BURT COMPANY IS  
PROHIBITED.

APPROVALS	DATE
DRAWN RCC	5/7/2012
CHECKED	

 <b>AN EMPLOYEE OWNED COMPANY</b> ORRVILLE, OH		TITLE	
		<b>NS 2.3-920-4 SPC LED 110 VAC (SPECTRA)</b>	
SIZE	DWG NO	REV	
B	720782002	00	
PN: 720782002		SHEET 1 OF 2	



**MOUNTING (BOLT PATTERN)  
(BOTTOM VIEW)**



NOTES:  
PRIMARY DIMENSIONS INCHES  
SECONDARY DIMENSIONS MILLIMETERS.

APPROX. WT:124.6 lbmass  
THIRD ANGLE PROJECTION

UNLESS OTHERWISE SPECIFIED  
DIMENSIONS ARE IN INCHES.  
TOLERANCES ON DECIMALS ANGLES  
0 = ± 0.030 ± 1/2°  
00 = ± 0.010  
000 = ± 0.005  
FRACTIONAL ± 1/64"  
1. ALL INSIDE EDGES TO HAVE  
.005" TO .035" FILLETS.  
2. ALL OUTSIDE EDGES TO HAVE  
.005" TO .015" CHAMFER OR RADIUS.  
125° ON ALL MACHINED SURFACES

**PROPRIETARY AND CONFIDENTIAL**  
THE INFORMATION CONTAINED IN THIS  
DRAWING IS THE SOLE PROPERTY OF THE  
WILL-BURT COMPANY ANY REPRODUCTION  
IN PART OR WHOLE WITHOUT THE WRITTEN  
PERMISSION OF THE WILL-BURT COMPANY IS  
PROHIBITED.

APPROVALS	DATE
DRAWN RCC	5/7/2012
CHECKED	

**WILL-BURT AN EMPLOYEE OWNED COMPANY**  
ORRVILLE, OH

TITLE  
**NS 2.3-920-4 SPC LED 110  
VAC (SPECTRA)**

SIZE B	DWG NO 720782002	REV 00
PN: 720782002	SHEET 2 OF 2	

ALL SPECIFICATIONS SUBJECT TO CHANGE WITHOUT NOTICE.